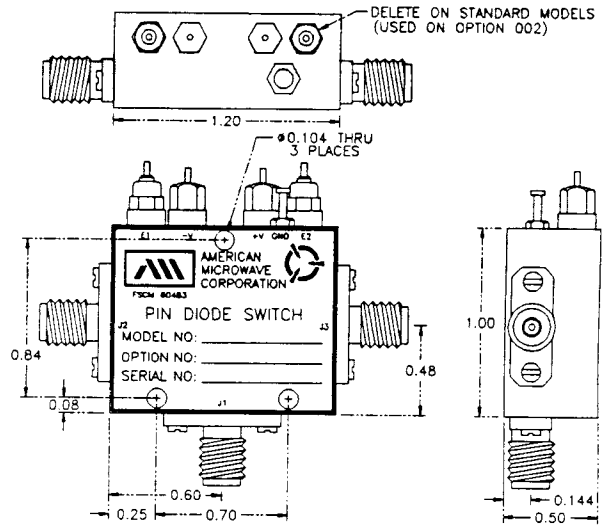


AMERICAN MICROWAVE CORPORATION

LOW VIDEO TRANSIENT 10 MHz TO 18 GHz REFLECTIVE, SPDT SWITCH

- 10 MHz TO 18 GHz
- LOW VIDEO TRANSIENTS
- VERY LOW LOSS
- HIGH ISOLATION



AMC MODEL No: SWN-RRA-2DR-0118-LVT

SPECIFICATIONS:

- | | |
|--------------------|---|
| ● FREQUENCY RANGE | : 10 MHz to 18 GHz |
| ● INSERTION LOSS | : 2.50 dB Max. |
| | : 1.20 dB Typ. @ 10 MHz |
| | : 1.00 dB Typ. @ 100 MHz |
| | : 0.36 dB Typ. @ 2.0 GHz |
| | : 1.10 dB Typ. @ 10.0 GHz |
| | : 1.90 dB Typ. @ 18.0 GHz |
| ● ISOLATION | : ≥70 dB Min. |
| | : ≥95 dB Typ. @ 100 MHz |
| | : ≥95 dB Typ. @ 2.0 GHz |
| | : ≥88 dB Typ. @ 10.0 GHz |
| | : ≥76 dB Typ. @ 18.0 GHz |
| ● VSWR | : 2.0:1 |
| ● SWITCHING SPEED | : RISE : 15nS Max., 10nS Typ. |
| | : FALL : 15nS Max., 10nS Typ. |
| | : ON : 100nS Max., 90nS Typ. |
| | : OFF : 100nS Max., 90nS Typ. |
| ● CONTROL | : TTL COMPATIBLE, (TOGGLE OR INDEPENDENT CONTROL AVAILABLE) |
| ● VIDEO TRANSIENTS | : ±0.75volt Peak to Peak, 20 MHz Bandwidth |
| ● RF INPUT POWER | : +20dBm Operating, 1 Watt Survival |
| ● DC POWER SUPPLY | : ±5vdc @ +60mA, -50mA Maximum |
| ● SIZE | : 1.2" X 1.0" X 0.5" |

ABSORPTIVE AND MULTITHROW VERSIONS AVAILABLE

7311G GROVE ROAD, FREDERICK, MARYLAND 21701 • Tel. (301) 662-4700 • Fax (301) 662-4938